

Safety Nets Australia

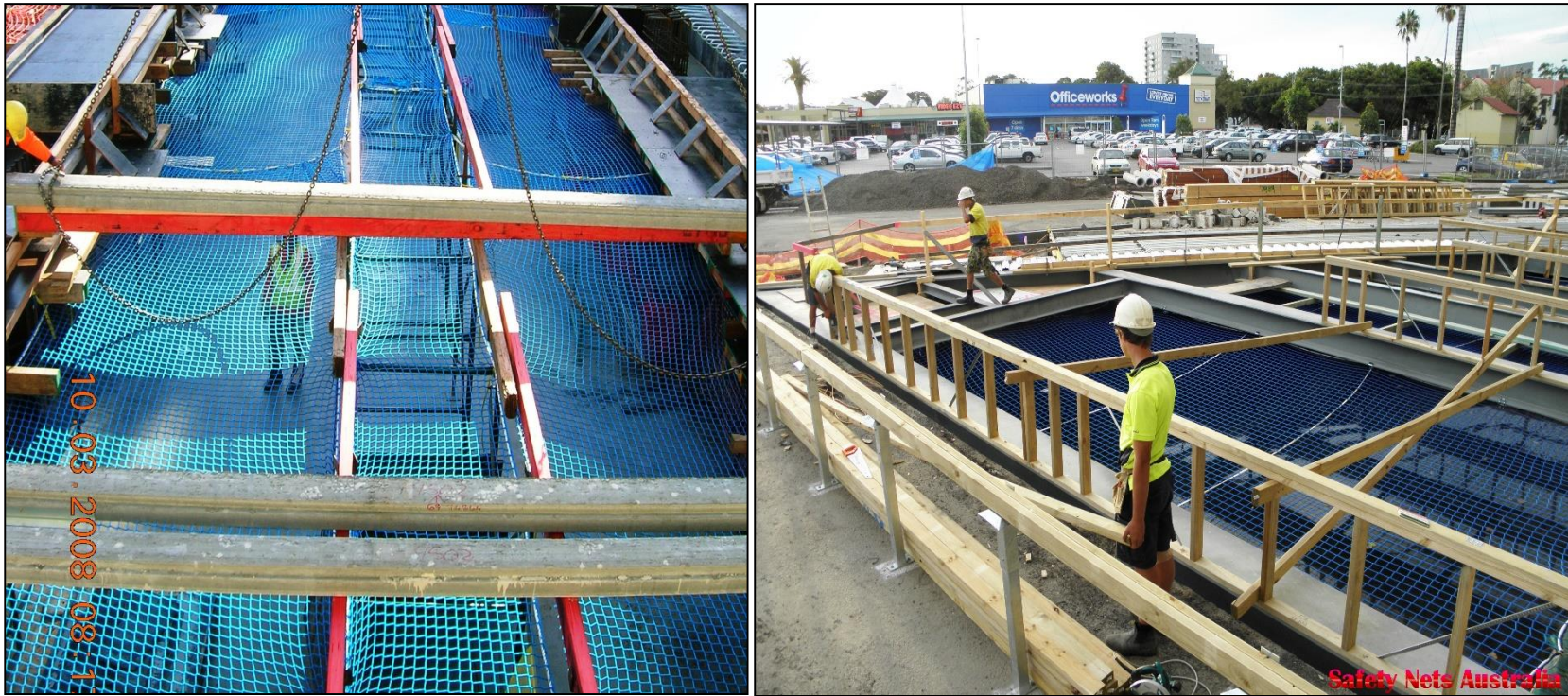
Using Safety nets in Bondeck placement applications has many great benefits that is being effective, efficient, and having a safe system in place to protect the workers in place, but importantly the workers are able to move freely to undertake the task safely without being fixed to point.

Tested for 6m falls*, and has safe working load (SWL)of 350kg
Mesh sizes available in 100x100x5mm/ 60x60x5mm and 45x45x5mm

With variety of fixing devices to suit many different structures
And with added overlay mesh on top you can eliminate small and fine objects from penetrating to areas below.



Formwork / Bondeck



Type of Safety Nets For FormWork / Bondeck and False Floors			DATE	20/05/2015	TITLE	Safety Nets Australia /0412 285603	
			DESIGN				
			APPD		Sarkis Elias		
			JOB No.		DWG No.	SIZE	REV
						A3	0